

## Test Case-18

**Test Name:** RJIL-IP-QA-DS-SYS-018

**Test Objective:** The Switch Shall Support IGMP v1v2 & MLD with snooping (MLDv2 for IPv6)

**Test Configuration:**

ip igmp-snooping

ip igmp-snooping v3

ip igmp-snooping querier

ip igmp-snooping sensitive

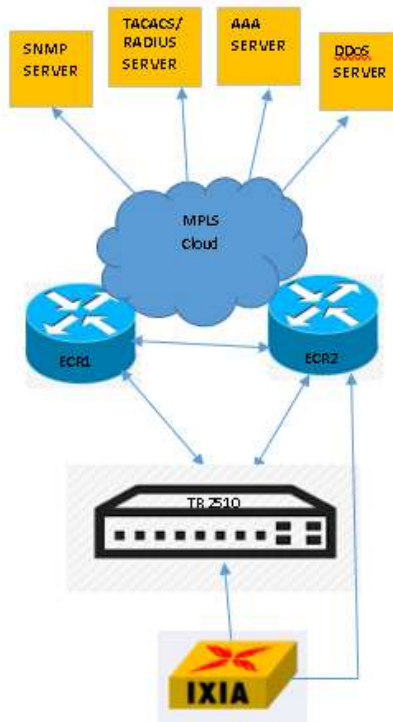
interface GigaEthernet0/3

ip igmp-snooping v3-compatible

switchport trunk vlan-allowed 335

switchport mode trunk

**Test Set up (Including Pre requisites):** Switch , IXIA



**Procedure:** Connect Switch to IXIA

show ip igmp-snooping groups

**Action:** Generate IGMP multicast traffic from IXIA and is forwarded to switch

**Response:** Switch shows the total number of groups entries against the VLAN

1

1

**Problem – Issues:** Not support MLDv2 and does not show number of groups entries against the VLAN

**Expected Result:** Switch shows the total number of groups entries against the VLAN

**Actual Result:**

GUICHECK#show ip igmp-snooping groups

The total number of groups 20

Vlan Group      Type Port(s)

-----

```
333 224.0.1.10 IGMP g0/1
333 224.0.1.11 IGMP g0/1
333 224.0.1.12 IGMP g0/1
333 224.0.1.13 IGMP g0/1
333 224.0.1.14 IGMP g0/1
333 224.0.1.15 IGMP g0/1
333 224.0.1.16 IGMP g0/1
333 224.0.1.17 IGMP g0/1
333 224.0.1.18 IGMP g0/1
333 224.0.1.19 IGMP g0/1
333 224.0.1.20 IGMP g0/1
333 224.0.1.21 IGMP g0/1
333 224.0.1.22 IGMP g0/1
333 224.0.1.23 IGMP g0/1
333 224.0.1.24 IGMP g0/1
333 224.0.1.25 IGMP g0/1
333 224.0.1.26 IGMP g0/1
333 224.0.1.27 IGMP g0/1
333 224.0.1.28 IGMP g0/1
333 224.0.1.29 IGMP g0/1
```

**GUICHECK#**

**!**

**ip igmp-snooping**

**ip igmp-snooping querier**

**ip igmp-snooping sensitive**

**!**